

Beacon
International College

*Highly Transformative
MBA for Successful
Career Reinvention*



MASTER OF BUSINESS ADMINISTRATION

Awarded by the University of East London, UK



**University of
East London**



Vision

To be an Institute of holistic education leading to achievement of individual aspirations.

Mission

To be the preferred institution committed to nurturing and developing every student with skills, knowledge and virtues useful to society by providing a holistic educational experience.

Cultural Statement

At Beacon, we believe in a culture of teamwork, respect, integrity, care and diligence.

Our success is based on our shared values and our commitment to provide a nurturing and holistic educational experience for our students, to deliver quality services, and to seek excellence in everything we do.

We believe in an open culture where feedback, knowledge and experiences are shared freely and diversity of thoughts celebrated. This allows innovation to flourish to add value to our processes and stakeholders.

We are keenly aware that people are our richest resource and the key to our sustained organisational growth. We therefore strive to develop our staff to their fullest potential, while helping them maintain work life harmony.

CONTENTS

- Welcome Message from the UEL's Director 01
- Welcome Message from the Beacon's Principal/CEO 02
- About Beacon International College 03
- About the University of East London, UK 04
- What Makes UEL's MBA Unique 05
- Global Rankings 07
- About Master of Business Administration (General) 09
- About MBA (MBA (Business Analytics) 13
- Life-Changing Success Stories 17
- Admission Criteria 19

UEL'S DIRECTOR MESSAGE

It gives me great pleasure to welcome you to the University of East London. We are delighted to be partnering with Beacon International College for our suite of MBA courses on their campus.

The University of East London has been pioneering futures since 1898: from the 2nd Industrial Revolution through to where we are now, the 4th. We are a careers-led university, dedicated to supporting our students to develop the skills, emotional intelligence and creativity needed to thrive in a constantly changing world.

We are proud to offer a quality education for our students and have embedded our pan institutional vision 2028 firmly into our MBA courses. This means that the degree you receive at Beacon International College is of the same standard as that for courses delivered to our students on our East London campuses.

I look forward to meeting you in my visits to Singapore. If you are ever in London it would be a pleasure to welcome you tour campuses.

With best wishes for your studies,

Adam Doyle

Director of Careers and Enterprise
Royal Docks School of Business and Law
University of East London



BEACON'S PRINCIPAL/CEO MESSAGE



It is with great pleasure that I welcome you to Beacon International College, a preferred institution committed to nurturing and developing every student with skills, knowledge, and virtues useful to society by providing a holistic educational experience. "Failure is the mother of success, we must seize the second opportunity to study hard and strive for success." It is my strong belief that everyone, irrespective of background, culture and race, has the right to a well-rounded education. Our college is committed to providing students with an enjoyable and enriching learning experience to develop his/her potential.

Being a CPE-registered educational provider, we have several full-time and adjunct teachers/lecturers. Many of them possess postgraduate qualifications and working experience in related industries to complement their teaching experience. We offer a range of industry-aligned diploma, undergraduate, and postgraduate courses in business, hospitality, logistics, and design at our campus and online. Working closely with Cardiff Metropolitan University and the University of East London, along with our passion for education, we will create the ideal learning environment for our students. We will continue to develop existing partnerships and establish new ones in areas relevant to our teaching and curriculum. Our college has a feedback and survey system which gathers suggestions and grievances on a regular basis. With these systems in place, our school is able to take the necessary and appropriate actions to continually improve our services to students in pursuit of educational excellence.

Beacon International College boasts a rich diversity of cultures in its students and staff and a commitment to international engagement. By being exposed to business and industry during their studies, students can expect to graduate as confident and career-ready individuals with highly sought-after knowledge, skills, and experience. Beacon is a vibrant institution with an exciting future and we hope to be your partner in achieving your academic dreams and we look forward to welcoming you as a student at Beacon International College.

Lee Hian
CEO/Principal
Beacon International College

ABOUT **BEACON** INTERNATIONAL COLLEGE



Formerly known as Beacon School of Technology, Beacon International College (Beacon) has come a long way from its humble roots to the prestigious private education institution it is today. Throughout the decades, one thing has remained unchanged and that is Beacon's ongoing commitment to the pursuit of academic excellence through the provision of high-quality educational services to all its students.

Far from its early beginnings decades ago, Beacon now boasts successful graduates from all walks of life, a full-fledged campus, state-of-the-art facilities, a pool of highly experienced faculty members, and a wide selection of undergraduate and postgraduate programmes offered in partnership with renowned universities in the UK.

As a testament to its outstanding quality in all key areas of management and the provision of quality education, Beacon has been awarded the 4-year EduTrust Certification by the Committee for Private Education (CPE). With the CPE imposing strict requirements on the qualifications and industrial experience of the lecturers, students can rest assured that only professionally qualified lecturers who comply with the regulations of the Enhanced Registration Framework (ERF) are deployed to conduct and develop programmes at Beacon.

ABOUT UNIVERSITY OF EAST LONDON UK



The roots of the University of East London (UEL) can be traced back to West Ham Technical Institute which was established in 1898. The university has come a long way and has been pioneering futures since then. Today, UEL has three full-fledged campuses, namely the University Square Stratford, Stratford Campus, and Docklands Campus.

As a career-oriented university, UEL is driven by its strong commitment to ensuring that its graduates can gain a competitive edge among a glut of qualified job seekers and be the first choice for top employers. UEL's wide array of programmes, underpinned by research and industrial partnerships, ensures that the skills and concepts learned by the students are directly reflected in the real world – both remotely and non-remotely.

Renowned for its high-quality teaching and research, UEL prides itself on being an innovative and enterprising university with a real-world focus. To cultivate future-ready graduates, all students at UEL will learn career-shaping skills to identify rewarding career opportunities in all their guises: a lifelong skill that will serve them throughout their entire career.

WHAT MAKES UEL'S MBA UNIQUE

Well-Pivoted MBA for Successful Career Transition & Reinvention

Wish to transition into big tech, go into venture capital, or even become an entrepreneur? Switching industries, functions, or both is one of the most common reasons why senior executives and professionals decide to invest in an MBA. There is simply no other master's degree that provides the launching pad to a wide range of career possibilities.

As such, the MBA offered by UEL is largely geared towards the career development of graduates and helping them catapult into a dream job unlike any they had. Rooted in contemporary topics, the UEL's pedagogical approaches are always fresh and innovative to ensure graduates are learning the business and leadership skills that are highly sought after by top employers.

Applied Learning Pedagogy for Senior Professionals & Aspiring Entrepreneurs

Beyond having essential management skills and expertise, most leaders are expected to be technologically savvy and be in a constant state of adaptation to unlearn and relearn rapidly on the job.

As a career-first university, UEL's MBA curriculum connects academic knowledge with real-world applications to help learners develop strong analytical, communication, leadership, and problem-solving skills that can be hugely beneficial for their entire career.

Earning this prestigious qualification will enable graduates to go into any sector, anywhere in the world. Top employers see professionally trained MBA graduates as potentially more effective as they can add value to the company by bringing a fresh pair of eyes to complex business situations.

On the other hand, students intending to start their businesses will be equipped with the business knowledge and hands-on skills required to hit the ground running upon graduation.

The deep connections forged during the MBA journey will also give graduates a significant leg up when it comes to achieving their entrepreneurial goals.

Blended Learning Approach Using Moodle

Blended learning refers to an educational model which integrates online learning with traditional instructor-led classes. This makes the blended learning approach more cost-effective and time-saving as it does not require additional commuting.

In an effort to deliver a highly effective and engaging learning experience, students of UEL's MBA programme will learn on one of the world's best Learning Management Systems – Moodle! Not only will students be granted full access to the educational content at their fingertips, but classes are also conducted interactively through pop quizzes, open-ended questions, and discussion forums.

Learn Relevant Soft Skills for the Remote Working Environment

Many companies are now figuring out that remote work is the future of work arrangements. Tech giants like Apple and Twitter are offering fully remote or hybrid work setups. As remote work becomes the new norm for most companies, employees holding managerial positions must learn to manage their teams and communicate effectively online, the sooner the better.

Studying the UEL MBA will equip learners with highly relevant soft skills to navigate the new reality of remote work. Upon graduation, learners will be well equipped with the ability to navigate the challenges of tech disruption in a complex global business environment, strategic thinking skills to thrive in today's digital world, and the readiness to take on upper-level management positions.



GLOBAL RANKINGS OF UNIVERSITY OF EAST LONDON



The Guardian 2021



Ranked 1st Student City for Higher Education



Find MBA



Ranked Top 50 Most Popular MBA in the UK and Ireland



The Complete University Guide (University League Tables 2022)



Ranked Top 15 in London for Marketing



Ranked Top 18 in London for Business and Management Studies



Ranked Top 22 University in London



National Student Survey (NSS) 2021



Ranked Top 16 in London for student satisfaction with teaching, Covid-19 measures, and mental health support



Times Higher Education (THE)



Ranked Top 250
#201–250 –
Young University
Rankings 2021



Ranked Top 250
#801-1000 –
World University
Rankings 2022



University of
East London

University of East London



91% of UEL's graduates are in work or further study within six months after graduation.

(University of East London Post Graduate Prospectus 2020)



Quality Assurance Agency (QAA) for Higher Education

UEL is awarded the QAA Quality Mark for meeting or exceeding UK expectations for quality and standards



HR EXCELLENCE IN RESEARCH

HR Excellence in Research Award

UEL is awarded HR Excellence in Research by the European Commission



Investors in People

UEL is awarded the IiP – a quality standard to acknowledge UEL's commitment to delivering continuous improvement in service delivery through the development of all employees within an organisation

MASTER OF BUSINESS ADMINISTRATION (GENERAL)



Programme Overview

DURATION: 12 MONTHS
STUDY MODE: FULL-TIME/PART-TIME

Learning Objectives & Outcomes

Specifically designed to prepare future business leaders, UEL's MBA is a dynamic, contemporary, and practical programme that is primarily geared towards career advancement. Besides the subject-specific information and knowledge, learners can expect to develop a comprehensive range of skills that will enhance their ability to think and act strategically. Their problem-solving and decision-making skills will be honed as they learn to approach business situations from different perspectives.



Sample Certificate

CORE MBA (GENERAL) MODULES

MODULES	DESCRIPTIONS
Managing Strategy, Operations and Partnerships	<p>In this module will enable you to explore the process of creating, evaluating and developing strategy and operations. You will be introduced to the challenges and practices associated with becoming strategic leaders and how organizations manage their operations.</p>
Managing Financial and Human Resources for Sustainable Business Success	<p>The module aims to develop the personal and professional skills that enhance employability and career opportunities. On the other hand, the module aims to develop your understanding and skills in people management and leadership. You will learn some key theories that underpin the latest thinking in the knowledge and skills of being an outstanding leader and manager, regardless of sector (private, public, or non-profit sector).</p>
Marketing in the Digital Age and Corporate Social Responsibility	<p>This module is designed to introduce you to contemporary principles and practices in marketing, in a customer focused and market oriented organisation. Relationship marketing is the recent marketing approach that develops around the buying and consumption experience. As such the module aims to develop your in depth understanding of the strategic role of marketing in business, and its impact on the market and society in the digital age.</p>
Mental Wealth: Professional Exchange & Applied Research <i>(Old Module)</i>	<p>This module provides the opportunity for you to develop the ability to diagnose and investigate a live, complex business issue from a variety of perspectives, to locate the work within the body of contemporary knowledge, to collect and analyse data, to derive supportable conclusions and to make practical and actionable recommendations for change, improvement or enhancement of current practice.</p>
Applied Business Project	<p>The aim of this module is to enable you to conduct a live applied business project. This could include a work-based project, business simulation, Bloomberg project, project management report, case study or other empirical work.</p>

CORE MBA

(GENERAL)

MODULES

MODULES	DESCRIPTIONS
<p>Mental Wealth: Professional Fitness & Leadership</p>	<p>As a business professional managing organisation, you will find yourself working in changing, challenging and complex global environments. Therefore, the management has become increasingly focussed on skills and self-development including key emotional, psychological, and social determinants of human performance are critical for successful professional practice. This module, as a 'mental wealth' initiative aims to develop a full range of skills, competences and experiences required for successful performance and practice in a range of potential careers. Your personal and professional development will be fueled by advancing your analytical, emotional, cultural, cognitive and social intelligences through taught and workshop activity primarily based on online learning and reflective practices. The module will fuel your potential by introducing you to a wide range of approaches (including reflective skills, self-care and empathetic alertness) and equip you with the confidence, competencies and courage to lead. This module provides the opportunity for you to demonstrate the ability to diagnose and investigate a complex business issue from a variety of perspectives, to locate the work within the body of contemporary knowledge, to learn from online learning platforms, to derive supportable conclusions and to make practical and actionable recommendations for change, improvement, or enhancement of current practice at individual, organisational and community level.</p>
<p>Business Simulation with Professional Development</p>	<p>The aim of this module is for you to develop, maintain and evaluate a successful organisation through advanced analysis and synthesis of data in a simulated 'live' context. You will focus on the process of business and professional development. You will demonstrate the ability to critically evaluate business success, make recommendations for improvement and manage their own career development.</p> <p>The module is designed to embed theoretical perspectives through participation in a business simulation over a number of financial years. Students will manage the business in a virtual environment analysing their process whilst using, and reflecting on, theories and frameworks they have studied.</p>



Career After MBA (General)



MBA graduates are welcome in any sector, anywhere in the world. Top employers value these candidates as they are professionally trained to provide new perspectives and offer effective solutions when tackling complex business situations.

Not only will the programme enhance graduates' employability in leading organisations and improve their likelihood of success in their new roles, but their lifetime earning prospects will also be greatly enhanced upon graduation.

MBA (BUSINESS ANALYTICS)



Programme Overview

DURATION: 12 MONTHS
STUDY MODE: FULL-TIME/PART-TIME

Learning Objectives & Outcomes

The aim of the Business Analytics pathway is to develop data-driven business leaders of the future. Not only will learners develop competencies in the field of Data Science (DS) applicable in the business industry, but they will also learn how to analyse data to derive Business Intelligence (BI) and use Business Analytics (BA) to make sound business decisions in today's increasingly complex business environment.



Sample Certificate

CORE MBA (BUSINESS ANALYTICS) MODULES

MODULES	DESCRIPTIONS
Managing Strategy, Operations and Partnerships	<p>In this module will enable you to explore the process of creating, evaluating and developing strategy and operations. You will be introduced to the challenges and practices associated with becoming strategic leaders and how organizations manage their operations.</p>
Managing Financial and Human Resources for Sustainable Business Success	<p>The module aims to develop the personal and professional skills that enhance employability and career opportunities. On the other hand, the module aims to develop your understanding and skills in people management and leadership. You will learn some key theories that underpin the latest thinking in the knowledge and skills of being an outstanding leader and manager, regardless of sector (private, public, or non-profit sector).</p>
Marketing in a Digital Age and Corporate Social Responsibility	<p>This module is designed to introduce you to contemporary principles and practices in marketing, in a customer focused and market oriented organisation. Relationship marketing is the recent marketing approach that develops around the buying and consumption experience. As such the module aims to develop your in depth understanding of the strategic role of marketing in business, and its impact on the market and society in the digital age.</p>
Mental Wealth: Professional Exchange & Applied Research <i>(Old Module)</i>	<p>This module provides the opportunity for you to develop the ability to diagnose and investigate a live, complex business issue from a variety of perspectives, to locate the work within the body of contemporary knowledge, to collect and analyse data, to derive supportable conclusions and to make practical and actionable recommendations for change, improvement or enhancement of current practice.</p>
Applied Business Analytics Project	<p>The aim of this module is to enable you to conduct a live applied project that should address a business problem. This could include a work-based project or a case study or other empirical research that will demonstrate understanding of applied research and the relationship between Business Analytics Theory and its practical implication in real life.</p>

CORE MBA (BUSINESS ANALYTICS) MODULES

MODULES	DESCRIPTIONS
Mental Wealth: Professional Fitness & Leadership	<p>As a business professional managing organisation, you will find yourself working in changing, challenging and complex global environments. Therefore, the management has become increasingly focussed on skills and self-development including key emotional, psychological, and social determinants of human performance are critical for successful professional practice. This module, as a 'mental wealth' initiative aims to develop a full range of skills, competences and experiences required for successful performance and practice in a range of potential careers. Your personal and professional development will be fueled by advancing your analytical, emotional, cultural, cognitive and social intelligences through taught and workshop activity primarily based on online learning and reflective practices. The module will fuel your potential by introducing you to a wide range of approaches (including reflective skills, self-care and empathetic alertness) and equip you with the confidence, competencies and courage to lead. This module provides the opportunity for you to demonstrate the ability to diagnose and investigate a complex business issue from a variety of perspectives, to locate the work within the body of contemporary knowledge, to learn from online learning platforms, to derive supportable conclusions and to make practical and actionable recommendations for change, improvement, or enhancement of current practice at individual, organisational and community level.</p>

MODULES	DESCRIPTIONS
Strategic Business Analytics	<p>The Industry 4.0 revolution is creating a transformational and competitive business scenario that is full of challenges that demand effective solutions. As a professional of the business industry you should be aware of the crucial role that business analytics – the strategic analysis of data to make the best decisions – plays in with regards optimising processes and creating competitive advantages. In this module, you will develop competences and abilities in the field of Data Science (DS) applicable in the business industry. You will learn how to analyse data to derive Business Intelligence (BI) and how to use Business Analytics (BA) to drive effective decisions and successful future outcomes. Two of the main components that make up Business Analytics include an effective management of data and statistical methods and informatic packages. This module will help you develop understanding of the theoretical and practical competences to be able to produce and manage strategic data in a business context as well as the application of statistics methods supported by computer tools to extract the value of the data and generate prescriptive business scenarios that guarantee the success of a company.</p>



Career After MBA (Business Analytics)

MBA (Business Analytics) graduates will be trained to determine the best analytic tools and practices to be used in specific scenarios, such as learning machine, statistical learning, mining, social media analysis, Internet of Things, cloud, and simulation. Top employers value these candidates as they are professionally trained to develop strategies in the field of data science and offer effective solutions when tackling complex business situations.

Not only will the programme enhance graduates' employability in leading organisations and improve their likelihood of success in their new roles, but their lifetime earning prospects will also be greatly enhanced upon graduation.

LIFE-CHANGING SUCCESS STORIES

No one tells the story of the MBA experience better than the on-campus students from UEL.

“UEL's MBA gave me an invaluable depth of knowledge in global business and each department's roles within an organisation.”

I'm very glad that I chose the path that I did and have the MBA in my back pocket moving forward. UEL's MBA gave me an invaluable depth of knowledge in global business and each department's roles within an organisation. Those tools have opened up doors for me globally and were a factor in the success of me achieving my dream job. I'd recommend it to anyone looking to improve their career path and skills.

Stefan Nielsen

MBA Graduate

On-Campus Student of UEL



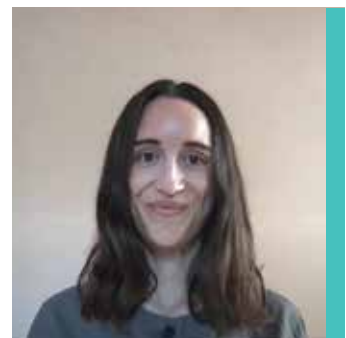
“I chose to do my MBA with UEL because of the reputation for the teaching skills that apply to real-world settings.”

I chose to do my MBA with UEL because of the reputation for the teaching skills that apply to real-world settings and because it allows me the flexibility to study alongside my leadership role for a mental health organisation. UEL was a great option for me because it provided a well-rounded learning experience. It not only provided me with a wealth of new business knowledge and skills but also increased my resilience and my ability to reflect and grow as a professional.

Amelia

MBA Student

On-Campus Student of UEL



“The course was superbly designed and based on contemporary, fresh topics along with practical experience.”

Because of its active learning environment, excellent academic support, and generous package of scholarships and bursaries, this college was my first choice when I decided to study in the UK. I knew that studying here will enhance my career options and that I will be able to build a network of professional connections. The course was superbly designed and based on contemporary, fresh topics along with practical experience. I also learnt to think strategically and the curriculum helped in enhancing my problem solving and decision-making ability.

Kumar Skand

MBA Student

On-Campus Student of UEL

“This is a career-led university with robust student support services and programmes taught by renowned members.”

I got to know about this university when I was searching for good universities in London that offer MBAs. I received some really good reviews about it from a friend of mine who said that this is a career-led university with robust student support services and programmes taught by renowned members. After going through the curriculum, I also learned a lot of things like thinking and acting strategically and creatively as well as identifying and evaluating ways to solve business problems, etc.

Aman Minhas

MBA Student

On-Campus Student of UEL

ADMISSION CRITERIA



Age Requirement

At least 20 years old

Academic Requirement

- Lower second-class classification (2:2) from an undergraduate degree or its equivalent
- A Polytechnic Diploma or Higher Diploma for mature students with a minimum of 8 years of managerial experience and are at least 30 years old as stipulated by the Committee for Private Education (CPE)

English Proficiency

For candidates whose first language is not English, they are expected to have at least an IELTS score of 6.0 (with a minimum of 6.0 in Writing and Speaking; a minimum of 5.5 in Reading and Listening) or its equivalent.

Exemptions/Credit Transfer/Advanced Standing

Candidates who do not hold such qualifications (i.e.: formal qualifications which marginally fall short of the normal minimum entry requirements), are at least 30 years old, and have held a responsible work position that is relevant to the master's degree for a minimum of 8 years will be assessed through an interview to ascertain their suitability for the programme.

Beacon International College and its partners reserve the right, at its discretion, to change, modify, add, or remove any information

www.beacon.edu.sg

Beacon

International College

70 Martaban Road
(Entrance at 39 Mandalay Road)
Singapore 328667

Tel: (+65) 6338 5595
Email: enquiries@beacon.edu.sg



Cert No.: EDU-2-2081
Validity: 20/10/2020 - 19/10/2024

Last Updated: 29 JAN 2024



*Please refer to the QR code
for course fee information*

ERF Registration No.: 200606284M
Valid from 02/08/2022 to 01/08/2026